

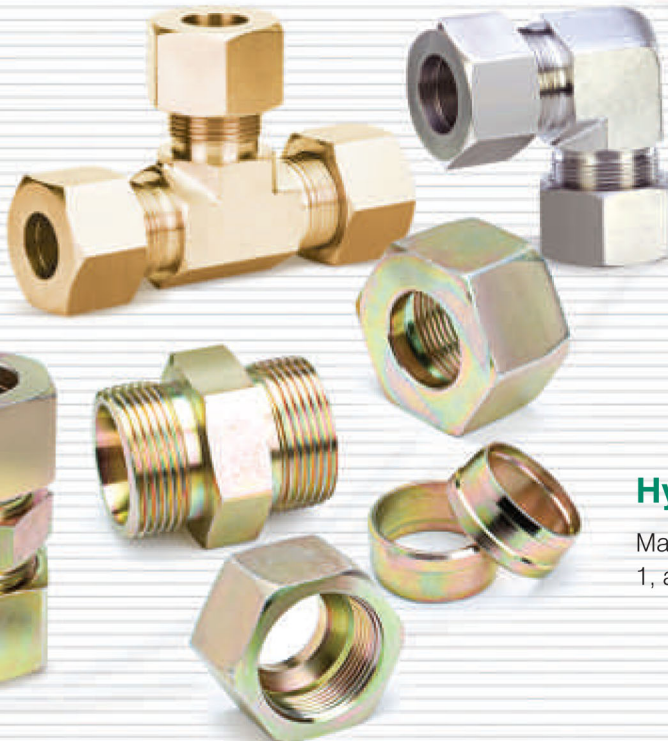


Compression Tube Fitting

Gaugeability, Interchangeability and Corrosion resistance are the features of Arya's Compression Tube Fittings, which provide a leak proof, torque free seal at all tubing connections in Instrumentation and Process Tubing.

Precision Pipe Fitting

Threaded in-line pipe fittings are made of various material depending upon application, Taper threads provide self sealant. In parallel thread 'O' rings are recommended.



Hydraulic Fitting (DIN 2353/8434-1)

Manufactured in accordance with DIN 2353 / DIN EN ISO 8434-1, available in stainless steel, carbon steel and brass.

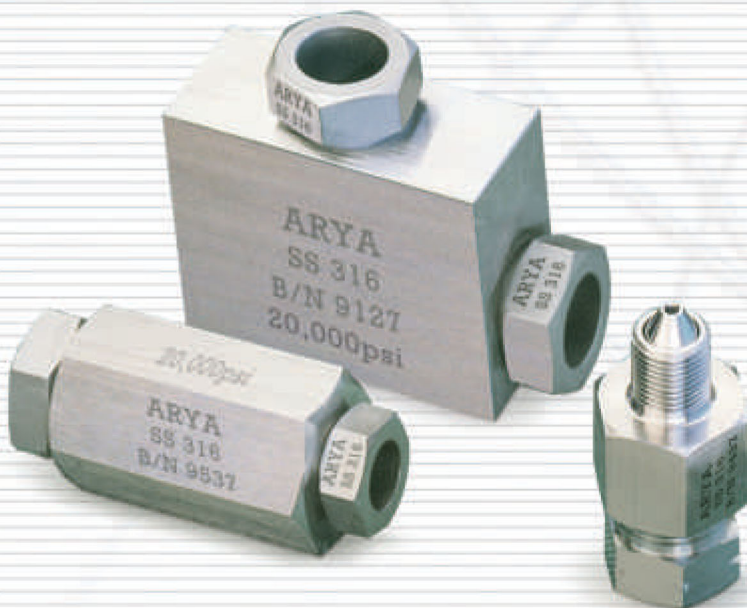


37° JIC-514/8434-2 Fitting (Flared Fitting)

Manufactured in accordance with SAE J514 / ISO 8434-2 standard available in stainless steel , carbon steel & brass.

10K/15K - Threaded Fitting

A complete range of taper seal fittings are made of High tensile SS316 stainless steel, to use upto 15,000psi pressure.



15K/20K - Adapter & Coupling

A complete range of cone end seal fittings are made of High tensile SS316 stainless steel, to use upto 20,000psi pressure.

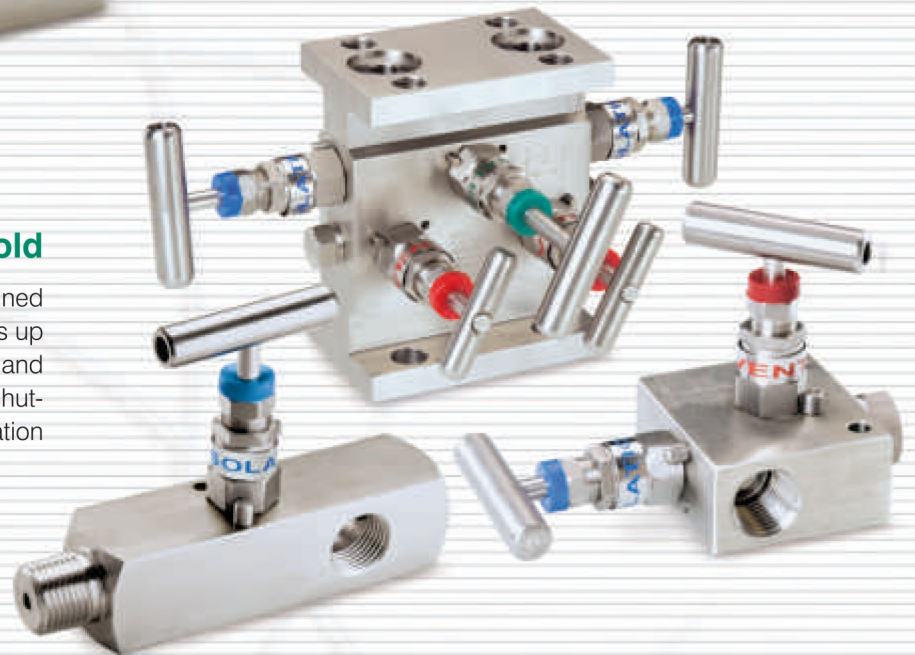


Needle Valve

Made with Forged or Bar stock body, Arya's Needle Valves are coupled with non-rotating stem, metal seating, soft packing, treated spindle. Fine threading of stem, large seat area, zero leak, precise and controlled resistance to flow, are the features of it. Designed to operate up to 20,000psi.

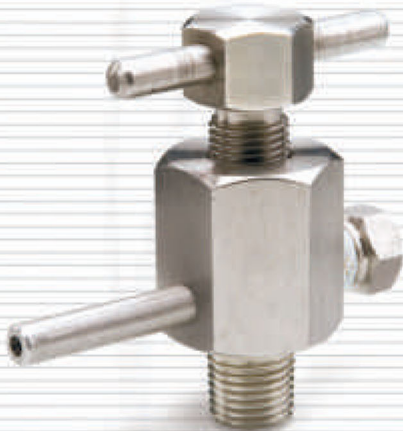
Manifold

Forged construction, Arya's Manifolds are designed and built to operate safely and reliably at pressures up to 6,000psi. Single/Double bonnet design with 2, 3 and 5 way configuration are coupled with bubble tight shut-off and low torque operation



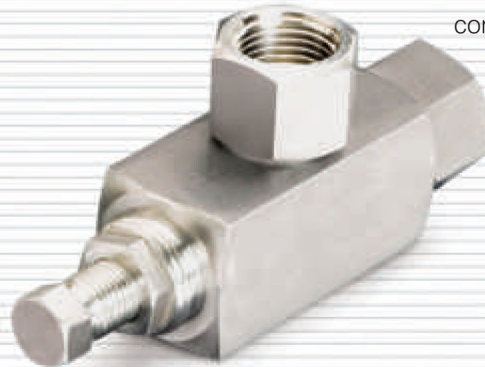
Ball Valves

Manufactured in 2 and 3 piece design in various material construction with various end connection. Available up to 10,000psi marking pressure.



Vent Valve

Available in stainless steel and carbon steel material of construction.



Pressure Relief Valve

Manufactured in stainless steel and carbon steel with various end connection and set pressure.

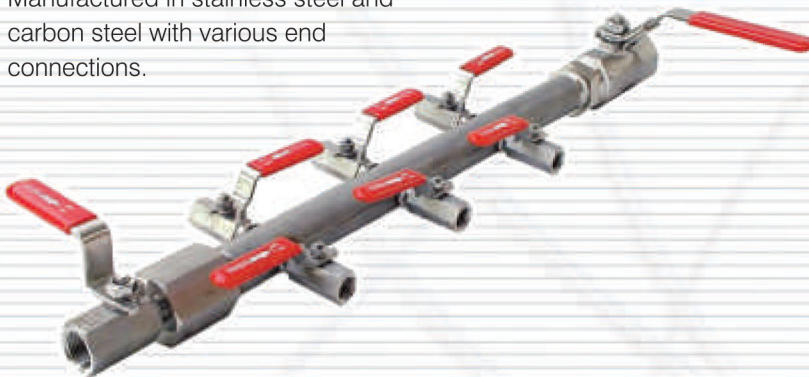


Check Valve

Arya's Non-Return Valve are designed with large orifice for maximum flow and low-pressure drop. These provide reliable operation of gases or liquids for set pressure up to 6,000psi, with various material construction and cracking pressure.

Air Header

Manufactured in stainless steel and carbon steel with various end connections.



Condensate Pot

Manufactured in stainless steel and carbon steel with various NB pipes of Sch 40/80.





Sampling Cylinder

Available in stainless steel and carbon steel NB pipes of Sch 40/80 with various liters capacity.

Syphone

Manufactured from various NB pipes of stainless steel and carbon steel with various end connections in coil or 'U' type.



Thermowell

Made in various MOC to suit application with fabricated or bar stock design having end connection as thread or flange and construction straight, tapered or stepped, Hydro Pneumatic test, good concentricity, radiography and ultrasonic test ensure reliable products.

Over Load Protector

Protect pressure instrument from over pressure.



Pulsation Dampener

Reduce impact of process pulsation impact on pressure instrument.



Pipe Clamp

Single and double tube clamps in light and heavy duty for mounting tube.

